

NEM
GROUP
Smarter Engineering.

CAPABILITY STATEMENT 2023-2024

CONTENTS

PAGE 2 - OVERVIEW

PAGE 2 - PROJECT ROADMAP

PAGE 3 - ROADMAP INDEX

EXPLORE OUR CAPABILITIES

PAGE 4 - DESIGN & ENGINEERING

PAGE 4 - MATERIAL PROCUREMENT

PAGE 5 - CNC CUTTING & SHAPING

PAGE 5 - FORMING

PAGE 5 - FABRICATION

PAGE 6 - BLAST & PAINT

PAGE 6 - ON SITE & WORKSHOP
EQUIPMENT

PAGE 6 - SITE SERVICES

PAGE 7/8 - CONCLUSION / CONTACT

OVERVIEW

NEM Group offers a comprehensive one-vendor solution for a large cross section of industry. With over 25 years' experience, we are a future-focused, versatile, diversified provider of metal engineering in manufacturing, maintenance and construction service Industries.

NEM Group was founded in 1997 and operates as a registered Australian owned company with its office and workshop located in Townsville, Queensland. It has become a go to North Queensland industry enabler through the adoption of advanced manufacturing capabilities and customer service offering.

NEM Group's Core Services include – Drawing, Design, Engineering, 3D scanning, 3D printing, Laser cutting, Plasma cutting, Waterjet cutting, CNC metal pressing/ rolling, Machining, Fabrication, Blast & Paint and Site maintenance/ construction services.

With NEM Group built on the principles of quality and safety, our manufacturing capabilities, well-appointed workshops combined with ISO certified practices guarantees a high-quality finished product every time you engage NEM Group.

DESIGN > MANAGE > DELIVER

WHERE WE WORK INDUSTRIES



ARCHITECTURE



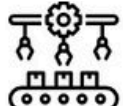
DEFENCE



AUTOMOTIVE



BUILDING & CONSTRUCTION



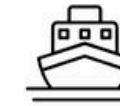
MANUFACTURING



MINING



ENERGY



MARINE



AGRICULTURE



INFRASTRUCTURE

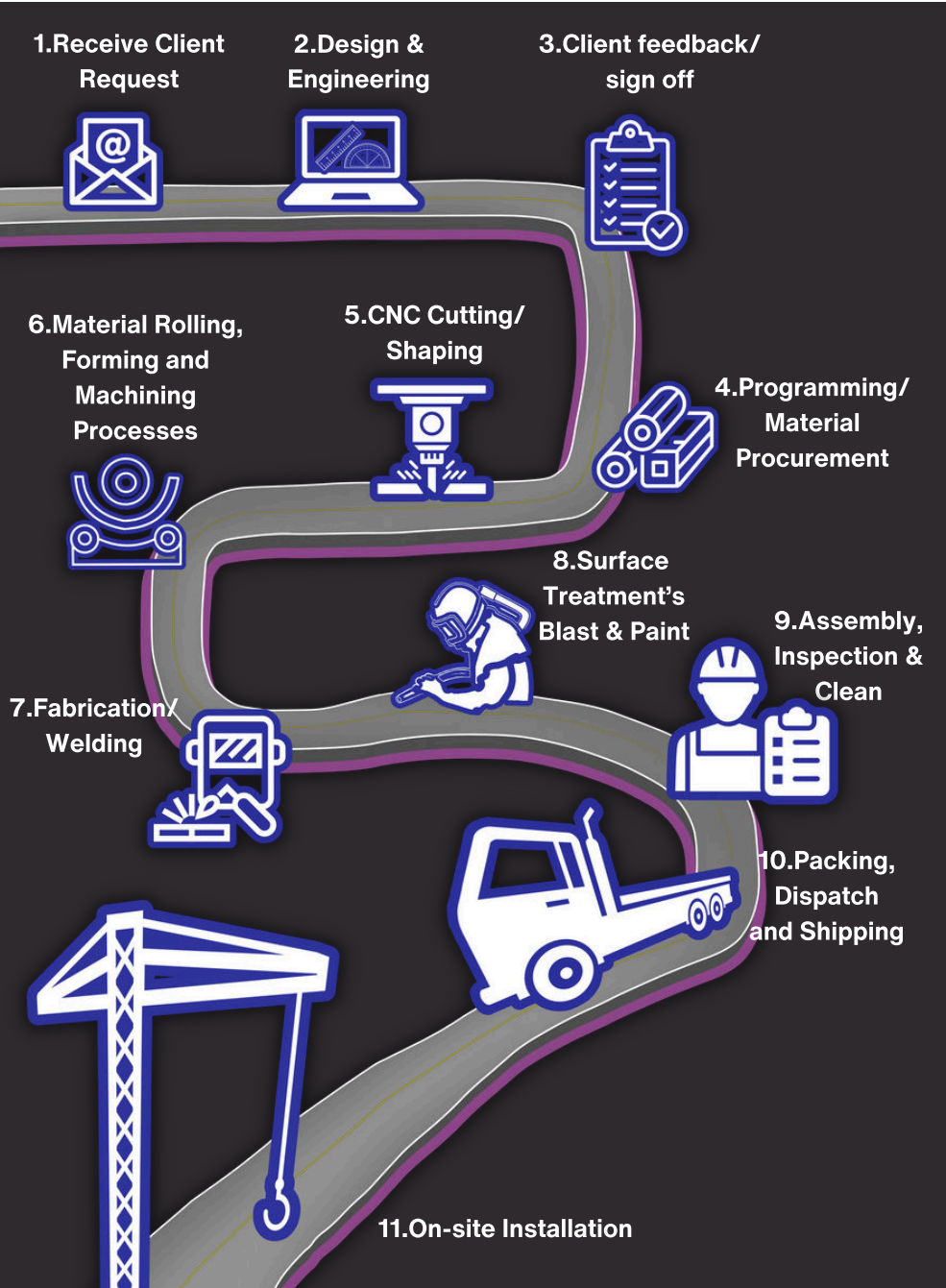


RECREATIONAL



TRANSPORT

PROJECT ROADMAP



ROADMAP INDEX

1 - RECEIVE CLIENT REQUEST

Clients can request quotes through email (sales@nemgroup.au) the website's "Get a Quote" page (www.nemgroup.net.au) or by scheduling a project discussion via phone (**07 4729 1000**)

Clients are requested to provide detailed project information, including images and project drawings (in preferred formats like **.ai, DXF, DWG, or 3D CAD**) to assist NEM Group with the request.



2 - DESIGN & ENGINEERING

NEM group offer clients Drafting/Design solutions using industry-standard software such as AutoCAD, SolidWorks, and Autodesk Inventor. NEM Group also have the capability for RPEQ certification for all your design needs.



3 - CLIENT FEEDBACK & SIGN OFF

NEM Group actively collaborates with our clients to thoroughly assess and enhance project designs and expectations, securing final approval and/or dimension check (DIM CHECK) prior to advancing to our production phase.



4 - PROGRAMMING & PROCUREMENT

During this phase, NEM Group acquires the materials required for the project from a range of supply partners, while also initiating the crucial process of programming the machinery necessary for production.



5 - CNC CUTTING & SHAPING

At NEM Group, clients benefit from our state-of-the-art Processing equipment that enables us to deliver fast and precise shaping and cutting services for various applications. Our capabilities cover a diverse spectrum of requirements, from light sheet metal components to heavy fabrication components, with a focus on popular materials such as Mild Steel, Stainless Steel, and Aluminium.



6 - MATERIAL ROLLING/FORMING & MACHINING PROCESSES

At our facility, for project plate rolling, our state-of-the-art Davi heavy-duty CNC 3-meter plate rollers are at your service enabling us to shape cylinders and cones with precision. We also provide precision bending and folding services with our 6-meter LVD Press Brake. You can also rest assured, your machining needs are seamlessly incorporated into our comprehensive manufacturing process.



7 - FABRICATION/ WELDING

NEM Group stands out as an industry leader integrating our fabrication workshop with our fully equipped advanced manufacturing facility. Our team of highly skilled trades - people with diverse experience in utilising fabrication methods across a range of different project materials, ensure the successful execution of both lightweight and heavy-duty fabrication projects in a cost-effective, efficient manner.



8 - SURFACE TREATMENTS BLAST & PAINT

NEM Group offers a range of surface treatment solutions including Blast & Paint, Powder Coating, and Hot Dip Galvanising. Our dedicated Blast and Paint facility, equipped with 2 blast sheds and 3 paint rooms ensures uninterrupted capabilities and high work capacity all year-round without experiencing the effects of the weather. Our experienced paint team can customise coatings to meet your specific project needs and testing requirements, delivering exceptional results.



9 - ASSEMBLY, INSPECTION & CLEAN

NEM Group's experienced staff perform thorough inspections ensuring quality products are produced and performs necessary clean-ups and assembly to exceed customer requirements. NEM Group are ISO-certified, meeting and exceeding AS/NZ 9001:2008 Quality standards. We can provide vital industry documents, like material certificates and Inspection Test Plans when requested. We are devoted to continuous improvement and excellence through rigorous QA/QC processes.



10 - PACKAGING, DISPATCH & SHIPPING

Our experienced team handles freight arrangements and packing for various destinations from long haul to client pickups from our Townsville facility. We offer loading up to 10 tons with forklifts and 20 tons utilising our Franna. Additionally, we also provide local delivery options with our own 12-ton flatbed truck or 30-ton drop deck trailer combo for added convenience and flexibility.



11 - ON-SITE INSTALLATION

Our experienced site team with a broad range of industry experience and qualifications can execute any project ensuring safety, site establishment, functionality, and compliance. NEM Group are equipped with all required site tooling, 30-tonne truck trailer combo, Franna, Tower-Crane, Man-box, Backhoe loader, Bobcat and Mine Spec - Site Vehicles to facilitate this process. Our transportation and crane assets within NEM group also provide enhanced control over project expenses and service delivery.



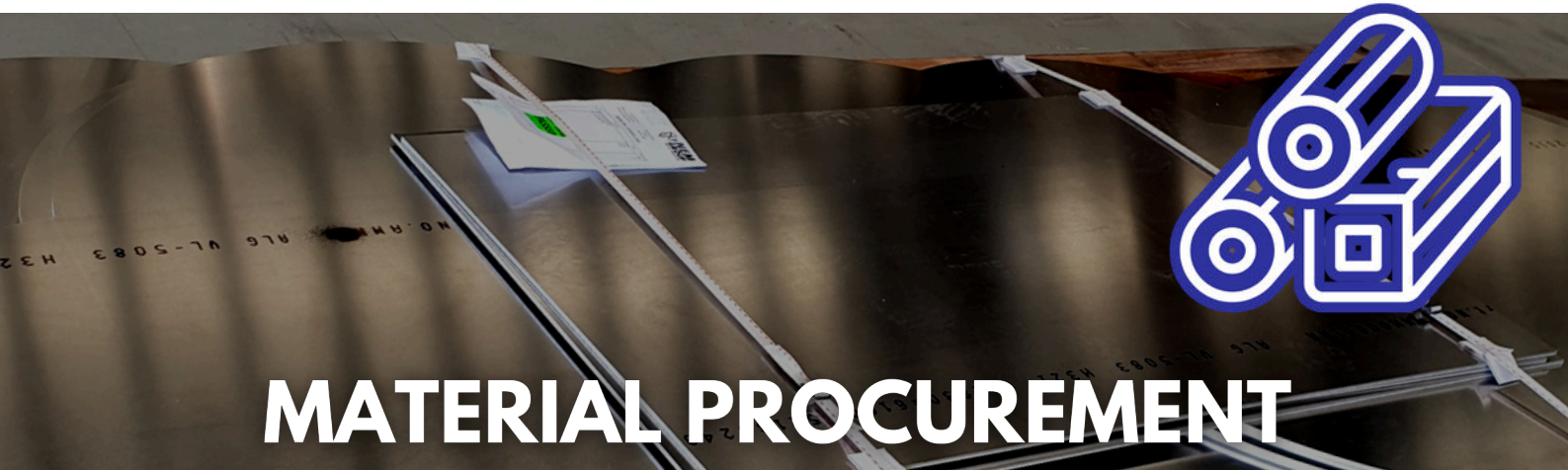


DESIGN & ENGINEERING

NEM Group has been providing engineering design services since 2006, using industry-standard software like AutoCAD, SolidWorks, and Autodesk Inventor. Our services encompass 2D drafting, 3D CAD design, engineering, FEA analysis, and certification with RPEQ engineering sign-off.

When OEM lead times are not feasible, we offer reverse engineering solutions using Advanced 3D Laser Scanning. We also provide small-scale 3D prototype printing with our 3D printer, accommodating a variety of filaments, including PLA, PETG, TPU, ABS, ASA, PVA, PET, PA, PC, and Carbon/Glass Fiber Reinforced Polymer.

Whether you have project cut files ready or need our experienced estimators to create them, our team is here to support you. Combining our comprehensive range of services NEM Group offers an all-in-one solution to meet your project needs.



MATERIAL PROCUREMENT

NEM Group maintains an extensive inventory of stock materials. Additionally, we have established partnerships with local suppliers, enabling us to promptly source a wide range of less common materials per your project requirements.

NEM Group specialises in delivering wear packages tailored to various industries, including mining, agriculture, and transportation. Thanks to our extensive network of partners, we have access to a diverse range of wear-resistant materials including metal, rubber, ceramics, and plastics.

Notably, we proudly serve as the exclusive distributor in North Queensland for **Alloys International** and the **AbrasaPlate** welded overlay wear plate range. Whether you require sheets of these products or customised cutting, shaping, rolling, and welding to meet your project's specific needs, we are well-equipped to fulfill your demands.



CNC CUTTING & SHAPING

LASER



Sheet thickness up to

- Mild Steel 25mm
- Stainless Steel 50mm
- Aluminium 25mm
- RotoLas pipe cutting

Max sheet size

- 6m x 2m

PLASMA



Sheet thickness up to

- Mild Steel 70mm
- Stainless Steel 70mm
- Mild Steel Oxy 300mm
- Bevel 45°

Max sheet size

- 12m x 4m

WATER JET



Sheet thickness up to

- Mild Steel 220mm
- Stainless Steel 120mm
- Aluminium 300mm

Max sheet size

- 4.267m x 2.1m

NEM Group hosts the largest industrial Plate cutting machines in North Queensland.

We have a large range of equipment at our disposal and offer quality cutting solutions ensuring your goods are always supplied correctly. With a Water Jet as part of our machine line up we can cut any material you require from thin rubber to thick metals, timber, glass, plastics, ceramics and composites.

FORMING

ROLLING



General capabilities

- Maximum Plate Thickness (60mm)
- Minimum Rolling Diameter (480mm)
- Maximum Plate Width (3000mm)
- Will roll 42mm Plate at 3m width
- 12m x 3m loading platform

FOLDING



General capabilities

- Sheet width - 6m
- Sheet thickness up to- 16mm
- (size dependant)

Please inquire with our team to learn more about the capabilities available in our region at our disposal.

NEM Group offer both large or small scale material folding and rolling capabilities and can complete simple or complicated designs as part of your project requirements. All forming processes are with the use of modern advanced technology equipment and processes at our disposal.

FABRICATION

WELDING



NEM Welding specialise in:

- Light to Heavy Fabrication,
- Pipe Fabrication,
- Plate work,
- Chutes, Vessels, Tanks
- Structural steel.

Weld qualifications ISO:9606 ISO:3834

MATERIALS



The most common materials we provide fabrication and welding services for are:

- Mild Steel
- Stainless Steel
- Aluminium.
- Zinc plated steel

NEM Group specialises in the manufacture of steel products and have the equipment, technology and the industry experience to deliver your project needs.

With 25+ years in business our expertise spans various North QLD industries. NEM Group delivers high quality work, employing highly skilled and qualified personnel. Our company's strong reputation stems from access to our advanced CNC cutting and forming facility and our ability to deliver any given project in its entirety delivering cost savings where possible. Our fabrication workshops are capable of producing almost anything across a multitude of industries and applications. We place an emphasis on safety and repeatable processes, and our **highly trained and experienced personnel remain focussed on each project from start to finish.**

BLAST & PAINT

ABRASIVE BLASTING



TIBP has a dedicated enclosed Abrasive blast chamber, utilising extraction equipment and media recycling equipment ensuring blasting can take place all year round. Regardless of the elements our experienced and qualified staff can blast to required specifications.

PAINTING & COATING



TIBP paint in dedicated paint bays and utilise extraction systems. TIBP can coat to any painted surface treatment/ specification provided.

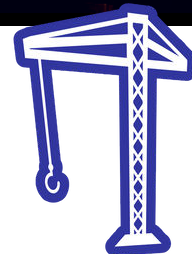
TIBP can also design a specification to suit the application. Our team are experienced in many painting systems from standard 2 coat procedures through to technical 3 coat systems and beyond.

Established in 2019 by NEM Group, **Townsville Industrial Blast and Paint** offers a comprehensive solution for clients. Handling diverse industrial paint projects, we draw on our team's extensive experience in defense, mining, construction, and more. NEM Group's quality coatings have earned us a solid reputation, serving local, interstate, and remote customers.

SITE SERVICES

NEM Group understands the unique requirements of the construction & mining industries and provides an extensive fleet of equipment, including tower and franna cranes, transport, loaders, and bobcats. Our top-notch machinery enables the efficient handling of large construction and refurbishment projects. Meanwhile, our qualified supervisors and tradespeople ensure high standards in the mining, sugar, defense, energy, and construction sectors. We offer on-site fabrication, repairs, and tailored refurbishment solutions, we deliver exceptional services for our clients' success. Choosing NEM Group means gaining a reliable partner for future needs, characterised by professionalism, expertise, and commitment. With access to our advanced workshop and skilled workforce, we excel in large industrial refurbishment projects across Queensland.

ON-SITE & WORKSHOP OWNED EQUIPMENT



- Site Tower Crane
- 20-Tonne Franna Mobile Crane
- 30-Tonne Road Freightier
- 5-Tonne Flatbed Truck
- Bobcat
- Backhoe Loader
- Site Utes
- Mobile and Quick Stage Scaffolding
- Tools of the trade site boxes
- Mobile Paint compressors
- Mobile Blast
- Mobile Pressure Washer- PSI 3500
- 3D Scanner
- M.I.G, T.I.G, Stick Welders
- Stud Welders
- Bandsaw 600 Diameter Cut
- Oxy & Acetylene sets
- Oxy Pipe Cutters
- Ladders
- Plasma, ACDC - high frequency
- Radial Arm Drill
- Robco 5/1 Wood Station
- Timber Drum Sander
- DJI Inspection Drone (photos)
- Punch and Shears
- 3D Prototype Printer – X1 Carbon
- Guillotine 3-meter x 6mm cutting
- Magnetic Drills, Drop Saws and various Grinders
- Mazak Lathe and Milling Machine
- Mobile workshop container with 240 volt supply
- AS500 Diesel Welding machines and DC Inverters
- Workshop Laydown for off - site assembly
- 2 x 10-Tonne Overhead Gantry Crane
- 1 x 8-Tonne Overhead Gantry Crane 8.5-meter hook
- 1 x 5-Tonne Overhead Gantry Crane
- Certified Lifting Equipment

WHY CHOOSE US?

BUSINESS VISION

“As North Queensland’s Leading Advanced Manufacturing Facility, NEM Group deliver cost effective solutions tailored to our client’s needs”.

No problems just solutions at NEM Group!

When you choose NEM Group for your project, you can expect savings, innovative engineering, cutting-edge technology, and a dedicated team of resourceful professionals who are part of a best-in-class business. Our commitment to continuous improvement, state-of-the-art equipment, streamlined processes, and problem-solving products gives NEM Group a distinct advantage. Combined with ISO certifications, large workshop facilities, experienced staff, and availability across Northern Australia, positions us to collaborate with major companies operating in regional areas and provide exceptional value. With capability for 24/7/365 operations and distinct local collaboration advantages, NEM Group offers clients ‘no problems, just solutions’ and a trusted continuous improvement advantage for the long term.

Trusted Value Proposition

NEM Group are ready and able to support and collaborate with major companies thanks to a number of key factors:

- ISO certified to ISO 9001 (Quality), ISO45001 (Safety), ISO14001 (Environment).
- Workshop facilities have the capacity for large projects in different stages of repair or manufacturing, we also offer large external project laydown.
- Available across Northern Australia for urgent works, backlog repairs and shutdown services at short notice.
- Extensive database of employees ready to join our already large team to get your equipment refurbished and recommissioned in exceptional time.
- Both NEM facilities are licensed to operate 24/7/365 enabling NEM Group to double day-to-day operational capacity.
- Extensive workshop facilities, on-site installation teams, road, port and rail hub proximity combined with local collaborative advantages are ideal for single supplier project completion.
- Entire suite of operational equipment, both on-site and off, is strategically geared towards managing and reducing end costs. With our ownership of a Franna crane, a 30 Tonne transport vehicle, and a Tower crane, we wield significant control over project expenses.

Trusted by prominent mining, agriculture, transport, defence, maritime and construction companies, NEM Group build and sustain enduring relationships. Visit our workshops for a first hand look, where our experienced team welcomes detailed project discussions. Alternatively, we are ready to bring our expertise to your office or site. Experience excellence – Design, Manage, Deliver with NEM Group!

Examples of common projects through our facilities are:

- Train Components
- Defence - Industry
- Truck/ Trailer Parts/Repairs
- Marine Structures
- Earthmoving Components
- Structural Steel
- Mining
- Sugar Mill
- Tanks, Vessels
- Machinery Parts

OUR CORE VALUES



QUALITY

delivery of continuous improvement promotes progress



SAFETY

promote a safety-first culture in maintaining a strong commitment to recognizing, analysing and avoiding workplace safety issues.



TECHNOLOGY & INNOVATION

to offer innovative solutions, pre-empt and solve problems utilising technology to save money for our customers



CUSTOMER PARTNERSHIPS

to build partnerships to promote and make our businesses sustainable.



TRUST / INTEGRITY / DEPENDABILITY

by developing and maintaining positive relationships our clients know they can rely on our business standards



ENVIRONMENT

we place sustainability and emissions reduction at the forefront by implementing responsible practices and embracing energy reduction initiatives.

GET IN CONTACT



WEBSITE

www.nemgroup.net.au



EMAIL

sales@nemgroup.au



PHONE

07 47291000



LOCATION

5 Mchugh ct
STUART, QLD
4811